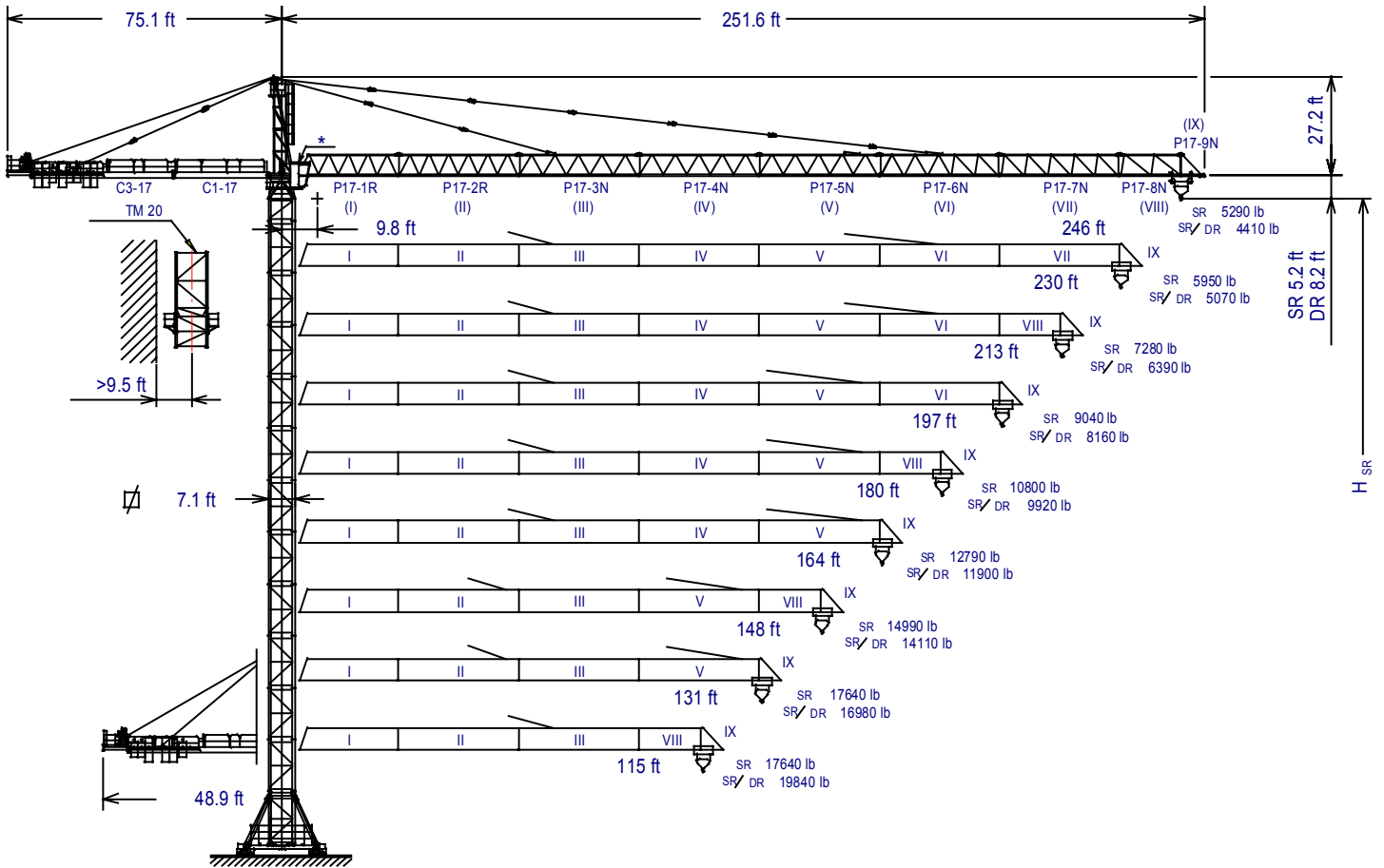


TOWER CRANE

J300.16

UNE 58-101-92
FEM 1001-87
Sound power level directives
84/534/CEE & 87/405/CEE
Machinery directives
89/392/CEE & 91/368/CEE

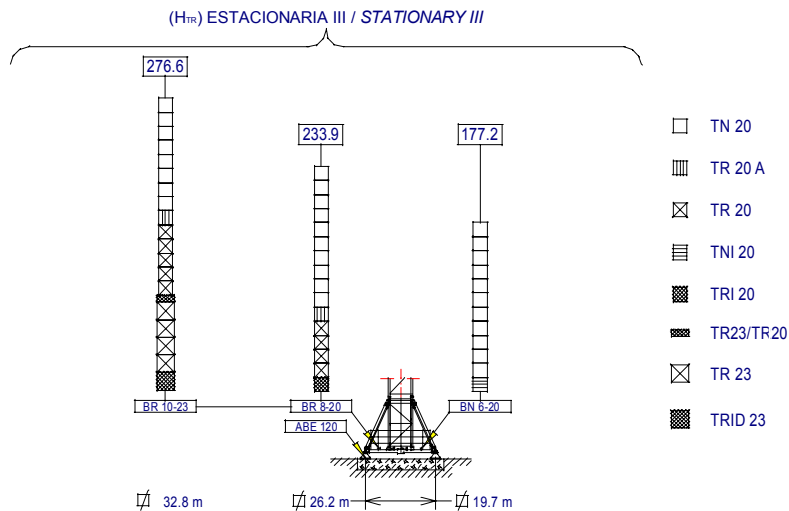
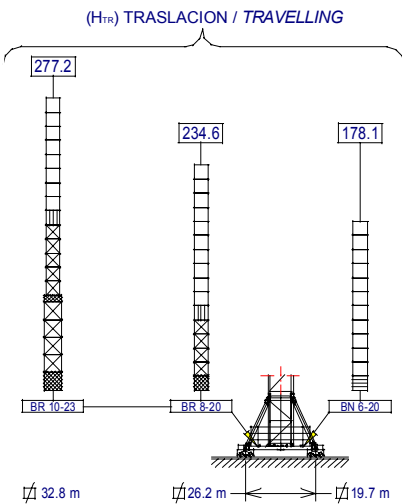
QUALITY ASSURANCE SYSTEM CERTIFIED ACCORDING TO
UNE-EN-ISO 9001 **CE**



C3-17	153.20.500	TN 20	136.31.000
C1-17	142.50.900	TR 20A	136.30.400
P17-1R	142.40.800	TR 20	136.30.000
P17-2R	142.41.800	TNI 20	200.30.500
P17-3N	142.42.500	TRI 20	153.30.000
P17-4N	142.43.500	TR23/TR20	142.36.500
P17-5N	142.44.500	TR 23	142.30.000
P17-6N	153.45.000	TRID 23	153.30.300
P17-7N	153.46.000	BN 6-20	200.20.000
P17-8N	142.46.500	BR 8-20	153.19.500
P17-9N	142.48.500	BR 10-23	153.20.500
TM 20	142.35.000	ABE 120	142.23.000

* Optional cabin

$H_{DR} = H_{SR} - 3 \text{ ft}$
 $H_{SR} = \text{Maximum height under hook without fastening (ft)}$




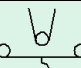
- TN 20
- ▨ TR 20 A
- ▩ TR 20
- ▧ TNI 20
- ▦ TRI 20
- ▤ TR23/TR20
- ▣ TR 23
- ▢ TRID 23




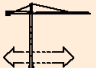
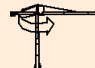




JASO EQUIPOS DE OBRAS Y CONSTRUCCIONES, S.L.

Date: 17-05-05 - Subject to modification, without previous warning

 SR (lb)		Maximum loads SR - 17640										17640 lb at ... (ft)
JIB	Hook reach (ft)											
	246	230	213	197	180	164	148	131	115	98		
246 ft	5290	5840	6480	7230	8110	9180	10470	12090	14180	16970	95.1	
230 ft	—	5950	6600	7350	8260	9330	10640	12280	14400	17200	96.3	
213 ft	—	—	7280	8090	9050	10210	11610	13370	15640	17640	103.5	
197 ft	—	—	—	9040	10090	11340	12880	14800	17270	17640	112.9	
180 ft	—	—	—	—	10800	12130	13760	15790	17640	17640	119.1	
164 ft	—	—	—	—	—	12790	14490	16600	17640	17640	124.5	
148 ft	—	—	—	—	—	—	14990	17170	17640	17640	128.3	
131 ft	—	—	—	—	—	—	—	17640	17640	17640	131.2	
115 ft	—	—	—	—	—	—	—	—	17640	17640	114.8	

 SR / DR (lb)		Maximum loads SR/DR - 17640/35270												17640 / 35270 lb at ... (ft)
JIB	Hook reach (ft)													
	246	230	213	197	180	164	148	131	115	98	82	66	49	
246 ft	4410	4960	5610	6360	7240	8310	9610	11230	13330	16120	17640 / 20020	17640 / 25870	17640 / 35270	91.4 / 49.6
230 ft	—	5070	5720	6480	7370	8450	9770	11420	13540	16360	17640 / 20300	17640 / 26240	17640 / 35270	92.4 / 50.3
213 ft	—	—	6390	7210	8170	9330	10740	12510	14780	17640 / 17810	17640 / 22060	17640 / 28420	17640 / 35270	99.2 / 54
197 ft	—	—	—	8160	9200	10460	12000	13930	16400	17640 / 19710	17640 / 24330	17640 / 31260	17640 / 35270	108.1 / 58.8
180 ft	—	—	—	—	9920	11260	12880	14870	17530	17640 / 21010	17640 / 25890	17640 / 33220	17640 / 35270	114.2 / 62.1
164 ft	—	—	—	—	—	11900	13600	15730	17640 / 18460	17640 / 22100	17640 / 27210	17640 / 34860	17640 / 35270	119.3 / 64.9
148 ft	—	—	—	—	—	—	14110	16290	17640 / 19110	17640 / 22860	17640 / 28110	17640 / 35270	17640 / 35270	122.9 / 66.8
131 ft	—	—	—	—	—	—	—	16980	17640 / 19890	17640 / 23770	17640 / 29200	17640 / 35270	17640 / 35270	127.1 / 69.1
115 ft	—	—	—	—	—	—	—	—	17640 / 19840	17640 / 23710	17640 / 29130	17640 / 35270	17640 / 35270	114.8 / 69

MECHANISMS FEATURES

MECHANISMS	*optional							
	EC10085VF		EC150125VF		TG4025VF	OG2207VF	TC770VF	TH2006
hp	100		150		4 x 10	3 x 7.5	7.5	20
SPEEDS	SR 5730 lb 9260 lb 17640 lb	ft/min 0...26/26...69/69...138/138...210/210...279 0...26/26...69/69...138/138...210 0...26/26...69/69...138	ft/min 0...39/39...102/102...203/203...308/308...410 0...39/39...102/102...203/203...308 0...39/39...102/102...203	ft/min 0...20/20...49/49...102/102...154/154...203 0...20/20...49/49...102/102...154 0...20/20...49/49...102	0..82 ft/min	0...0.2 0.2...0.35 0.35...0.7 sl/min	17640 lb 0...230 ft/min 35270 lb 0...115 ft/min	2 ft/min
Maximum hook course	SR	556 ft 1194 ft	3 layers 6 max. layers		 400V 50Hz	Power required with ... EC10085VF = 170 hp EC150125VF = 220 hp		
	DR	278 ft 597 ft	3 layers 6 max. layers		 480V 60Hz	Powers and speeds: 20% more		

IMPORTANT: When the height under hook increases, the hoisting load will decrease. If the height under hook is higher than the free standing height, consult with JASO EQUIPOS DE OBRAS Y CONSTRUCCIONES, S.L.



DENOMINATION		L (ft)	A (ft)	H (ft)	W (lb)	
Lower tower	TN 20 – TR20	14.7-15	7.2-7.1	7.4	5963-7826	
	TNI 20 – TRI 20	14.7	8.3	8.3	7297-8907	
	TR 20A	14.7	7.1	7.4	7727	
Slewing table, tower head base and slewing mechanism			16.7	7.8	8.3	16292
Tower head			26.9	4.6	6	6217
Slewing table assembly, tower head and slewing mechanism			39.9	10	8.1	23700
Jib section	P17-1R (I)		28.6	5.5	6.5	3858
	P17-2R (II)		33.4	5.2	6.7	4482
	P17-3N (III)		33.4	5.2	6.7	4564
	P17-4N (IV)		33.4	5.2	6.2	3744
	P17-5N (V)		33.4	5.2	6.5	3390
	P17-6N (VI)		33.4	5.2	6.5	3318
	P17-7N (VII)		33.4	5.2	6.2	2756
	P17-8N (VIII)		17.4	5.2	6.2	1647
	P17-9N (IX)		7.1	5.2	7.2	794
Hook assembly	SR		3.5	1	3.1	650
	DR		3.9	1.2	6.5	1280
Jib support tie	Long		16.3	1.3	2.4	3538
	Short		19.7	0.7	2.3	1918
Trolley	SR		5.78	7.6	9.9	882
	DR		6.3	7.7	9.9	1280
Counterjib with platforms			39.7	9.1	2	6800
Counterjib extension with platform			27.2	6.3	1.9	4244
Platform and cabin			12.1	5.3	7.4	1808
Support and hoisting	EC 10085 VF		9.9	7.5	7	8157
	EC 150125 VF		9.9	7.5	7	8598
Jacking cage			26.7	9.1	9.1	7915
Ballast	Stationary III / Travelling		12.5	1.9	4.9	13230
Counterweight	Big		4.9	2	7	9040
	Small		4.9	2	4.5	5640

BALLASTS		For intermediate heights take the ballast corresponding to the higher height		
BR 10-23	Height under hook (ft)	277.2	237.5	194.9
BR 8-20	Height under hook (ft)	234.6	191.9	149.3
BN 6-20	Height under hook (ft)	178.1	135.5	92.8
Number of ballast blocks to put	Blocks of 13230 lb	12	10	8



TORRES TOWERS	ALTURA HEIGHT	Diagram				ALTURA HEIGHT	TORRES TOWERS
1	22.3	TN 20	TN 20	TN 20	136.31.000	22.3	1
2	36.4	TND 20	TND 20	TND 20	136.31.500	36.4	2
3	50.5					50.5	3
4	64.6					64.6	4
5	78.7					78.7	5
6	93.2					93.2	6
7	107.3					107.3	7
8	121.4					121.4	8
9	135.5					135.5	9
10	149.9			TR 20A	136.30.400	149.9	10
11	164			TRD 20A	136.30.800	164	11
12	178.8			TR 20	136.30.000	178.8	12
13	192.9			TRD 20	136.30.500	192.9	13
14	207			TR 23/TR 20	142.36.500	207	14
15	221.1			TR 23	142.30.000	221.1	15
				TRD 23	142.30.500	210.6	14
				AR 20		224.7	15
				ARD 17/20/23		238.8	16
				ARDC 17/20/23			

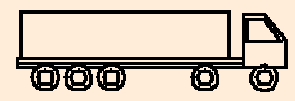
AN 20	136.21.000
AND 17/20/23	142.21.800
ANDC 17/20/23	142.21.700
AR 20	136.21.500
ARD 17/20/23	142.21.900
ARDC 17/20/23	142.21.600
AR 23	142.21.500

The represented tower configurations are assembly recommendations that can be used in any installation. Each tower section in its indicated position can also be used as the lower element of the mast tower in standard freestanding crane with its corresponding height under hook.

Tower configurations not shown here, with greater heights under hook or with different tower sections, are also possible but must be checked and confirmed in writing by our technical department in every individual case and before crane installation starts.

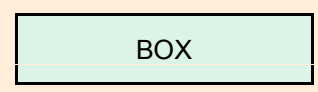
Free standing crane transport with travelling base of 19.7x19.7ft without base ballast

In trucks



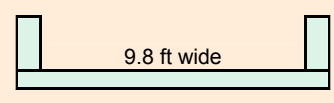
8 units
9 units

In containers

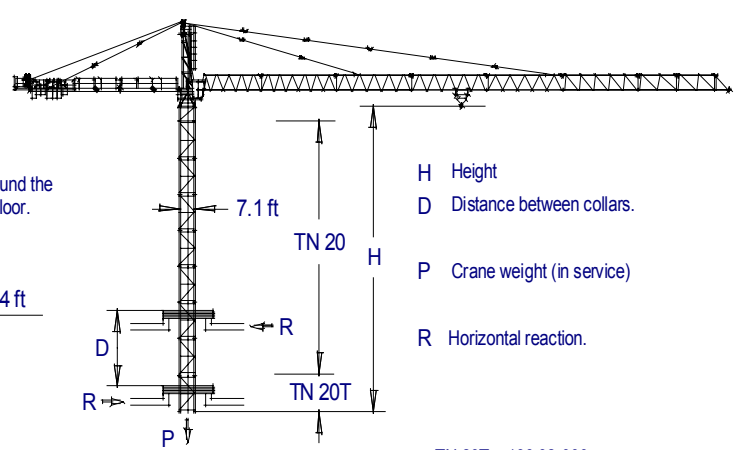


9 units
10 units

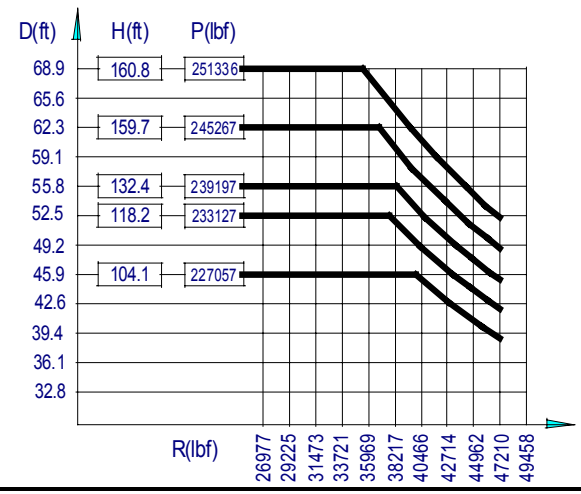
FLAT RACK



1 unit



TN 20T = 136.32.000



JASO EQUIPOS DE OBRAS Y CONSTRUCCIONES, S.L

Ctra./Rd. Madrid - Irún Km. 415
20.213 IDIAZABAL (Gipuzkoa)
ESPAÑA / SPAIN
P.O. Box, 23 - 20.200 BEASAIN

Tel. +34 943 - 18 70 00
Fax. +34 943 - 18 70 20
E-mail: jaso@jaso.com
http://www.jaso.com

Date: 17-05-05

Subject to modification, without previous warning

DELEGATION